

A Changing Landscape

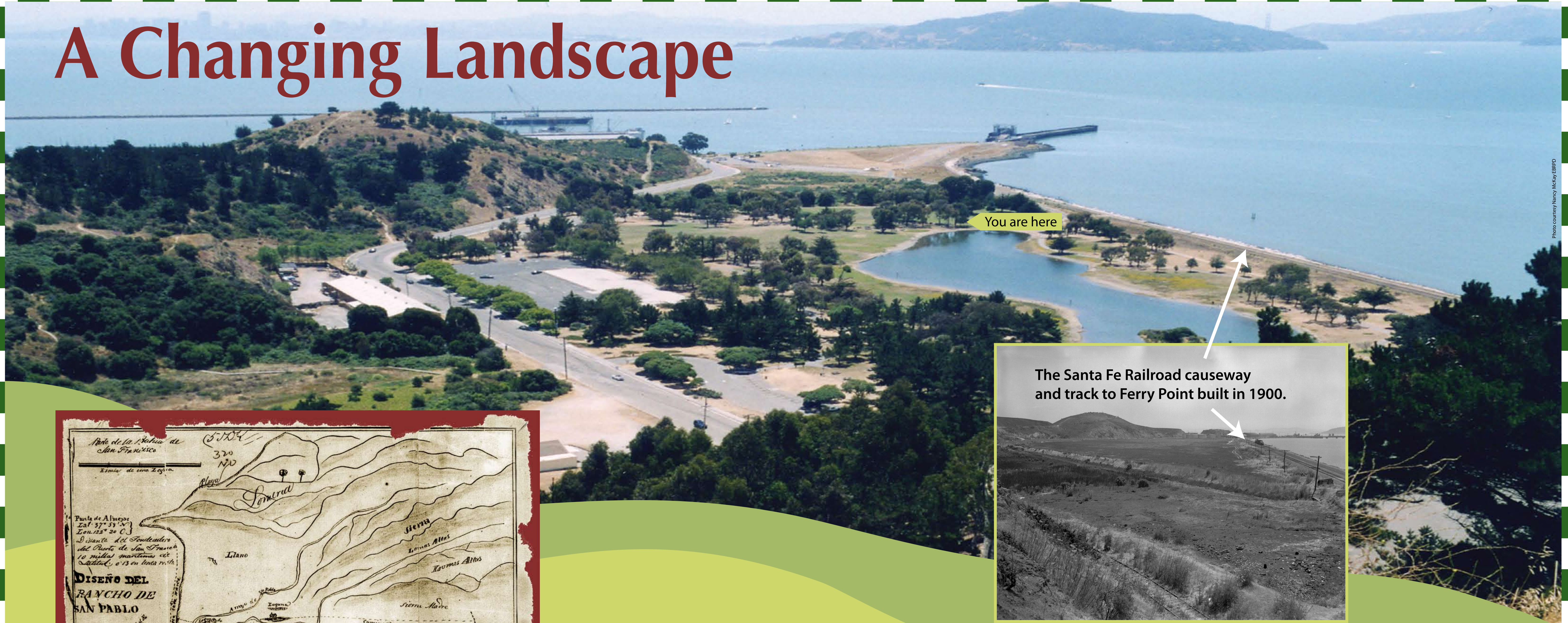
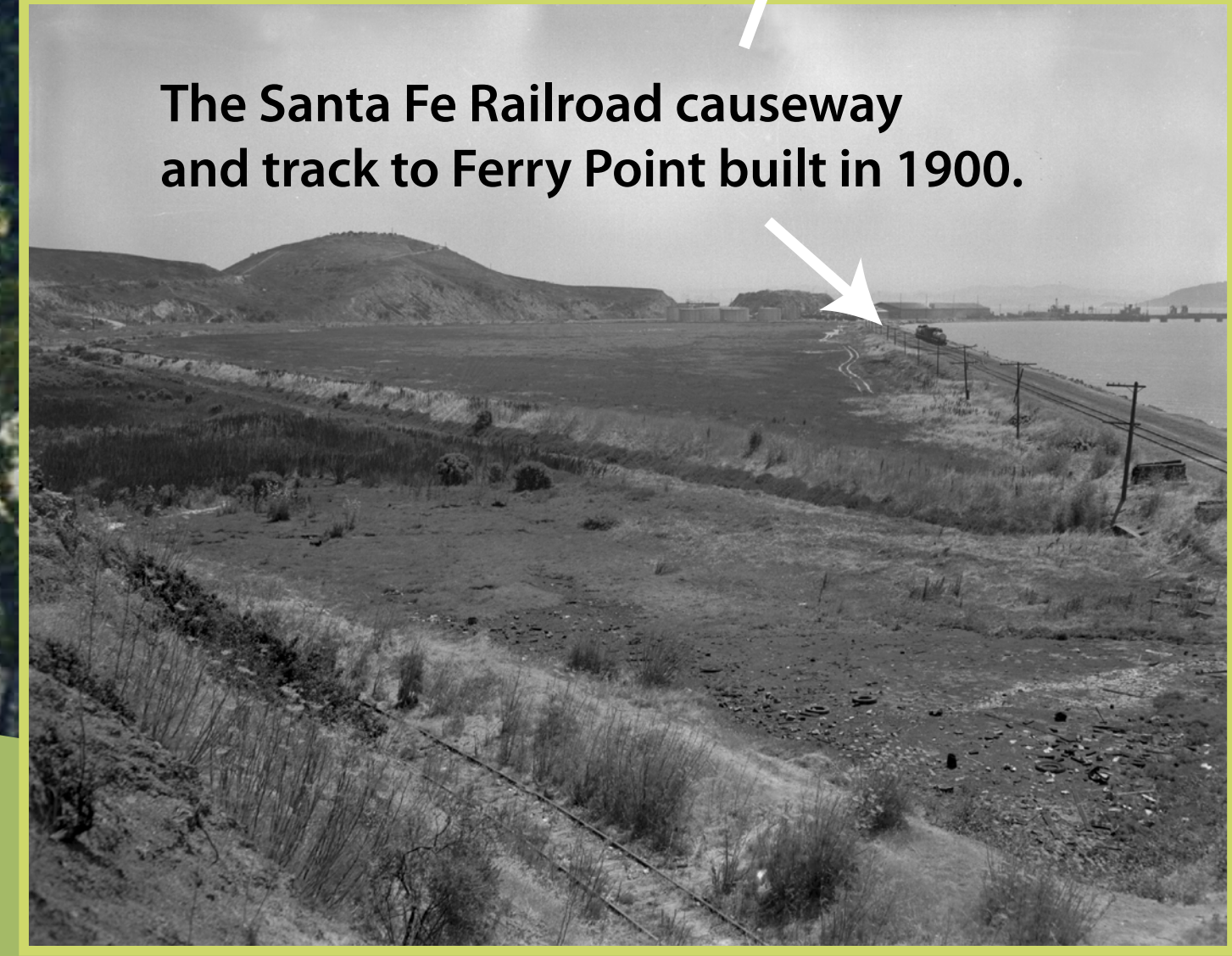
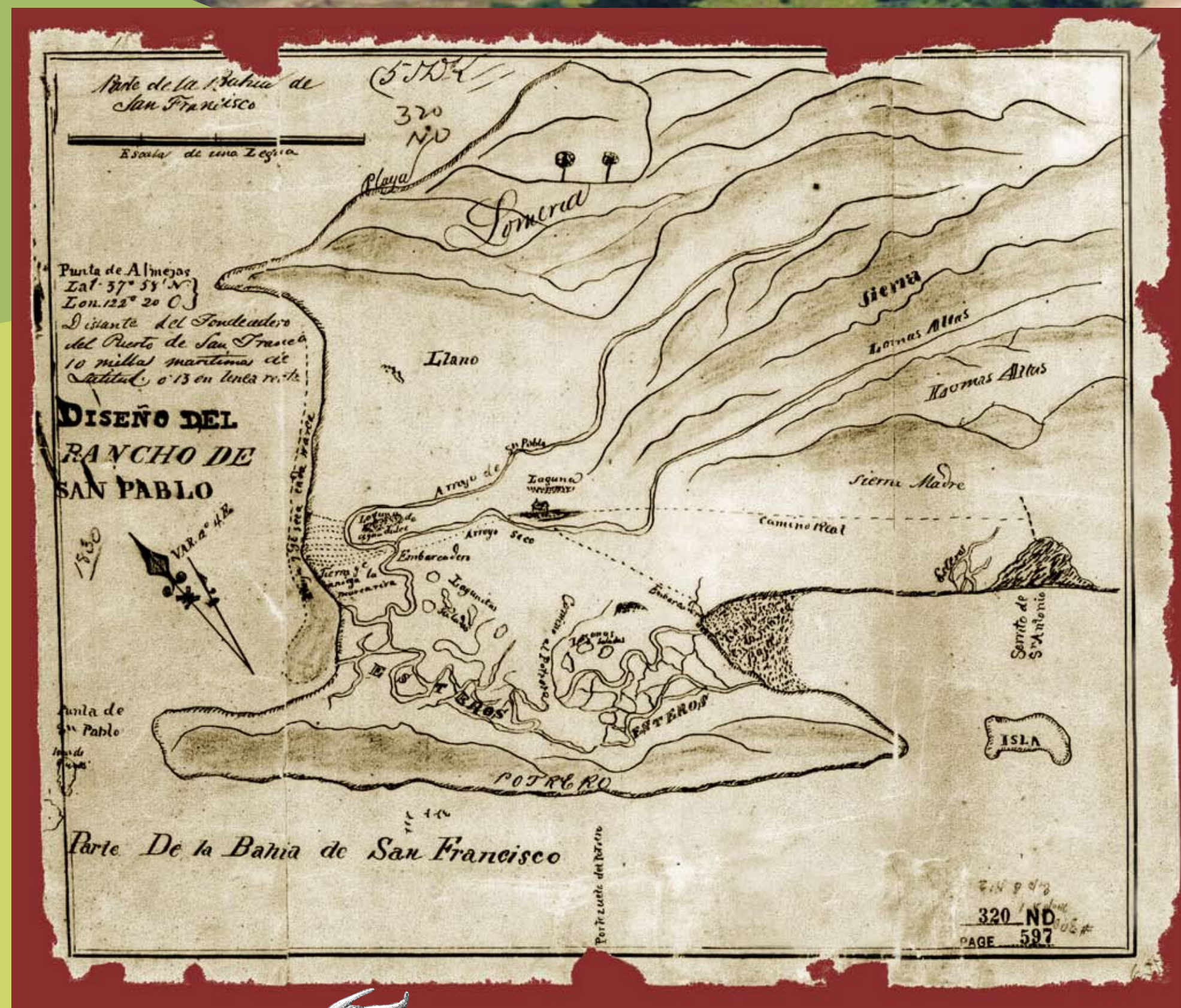


Photo courtesy Nancy Mackey EBPPD



The Santa Fe Railroad causeway and track to Ferry Point built in 1900.

Courtesy of The Point Richmond History Association



Courtesy of The Bancroft library



A map or *diseño* of Rancho San Pablo from around 1830. Today's Miller/Knox park occupies the "Potrero" area on the lower right.

Long ago, this area's highlands formed an island, surrounded by water and marsh. Known as the Potrero (Spanish for pasture), the lush green hills were once covered with cattle from nearby Rancho San Pablo.

Rocky fill, quarried from the ridge's east side, helped connect the Potrero to the mainland, and soon provided the foundation for a growing city.

Here, the park's flatlands occupy what was once a shallow cove of the bay. Dornan Drive follows the original shoreline.

In 1900, Santa Fe Railroad built a causeway across the cove to Ferry Point. There, at the end of the line, trains laden with passengers or freight met ferry or barge for the trip to San Francisco.

Construction of the causeway produced a muddy lake. It was later filled in with dredge spoils. Today's lagoon was built in the 1970s on these flatlands—the first lands acquired for the new park that eventually became Miller/Knox Regional Shoreline.